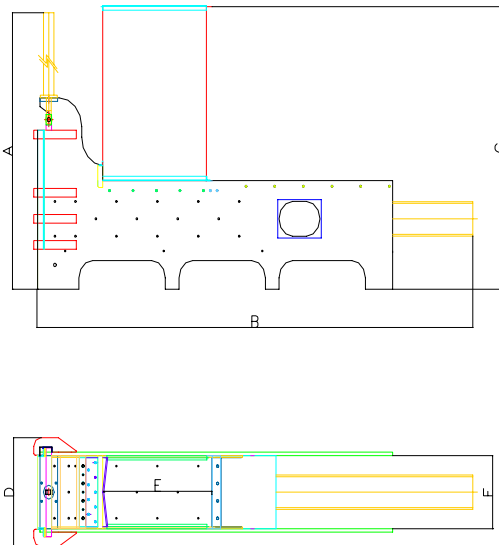


“FLEX” Can & Metal balers



Specifications	Flexipack	Flexipack ULTRA
<i>Bale size(mm)</i>	300width x 400 high 150 long (variable)	570 width x 570 high 700 long (variable)
<i>Bale weight</i>	13 kg Aluminium / 22 kg steel	75 kg Aluminium / 200 kg Steel
<i>Bales per hour</i>	20	4
<i>Electric Motor(Kw)</i>	15 / 30	30
<i>Hydraulic cylinder bore/rod/stroke</i>	7" x 4" x 1700mm	9" x 5" x 2900mm
<i>System pressure (PSI Max)</i>	2900	3100
<i>Hydraulic power</i>	35 Tonne	60 Tonne
<i>Dry cycle time (sec)</i>	55	60
<i>Loading chamber</i>	400 wide x 700 long	570 wide x 700 long
<i>Oil capacity (litre)</i>	200	500
<i>Remote controls</i>	Optional	Optional
<i>Conveyor control</i>	Yes	Yes
<i>Dimension "A" (mm)</i>	1590	2300
<i>Dimension "B" (mm)</i>	3200	5200
<i>Dimension "C" (mm)</i>	1625	1750
<i>Dimension "D" (mm)</i>	626	850
<i>Dimension "E" (mm)</i>	400	570
<i>Dimension "F" (mm)</i>	760	760
<i>Baler weight (Kg)</i>	2000	5000

Strength, Safety, Innovation, and Service ...

Note: All FLEX Products are tried and tested to meet the demands of industry worldwide. Product recommendations in this form are intended as a guideline only and are accurate to the best of our knowledge. FLEX accept no responsibility for the unsuitability of a particular product and customers are strongly advised to carry out their own evaluation tests prior to specifying FLEX products for certain applications. All specifications are subject to change without warning.